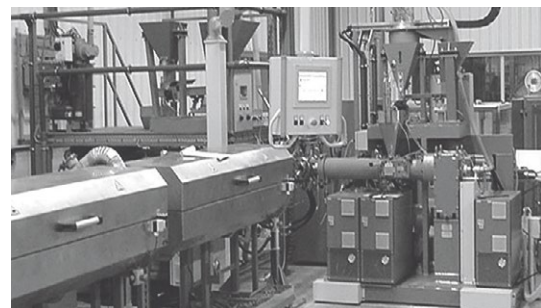
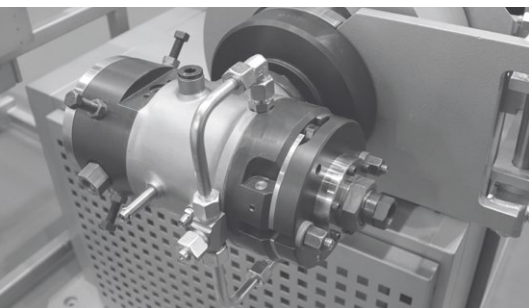
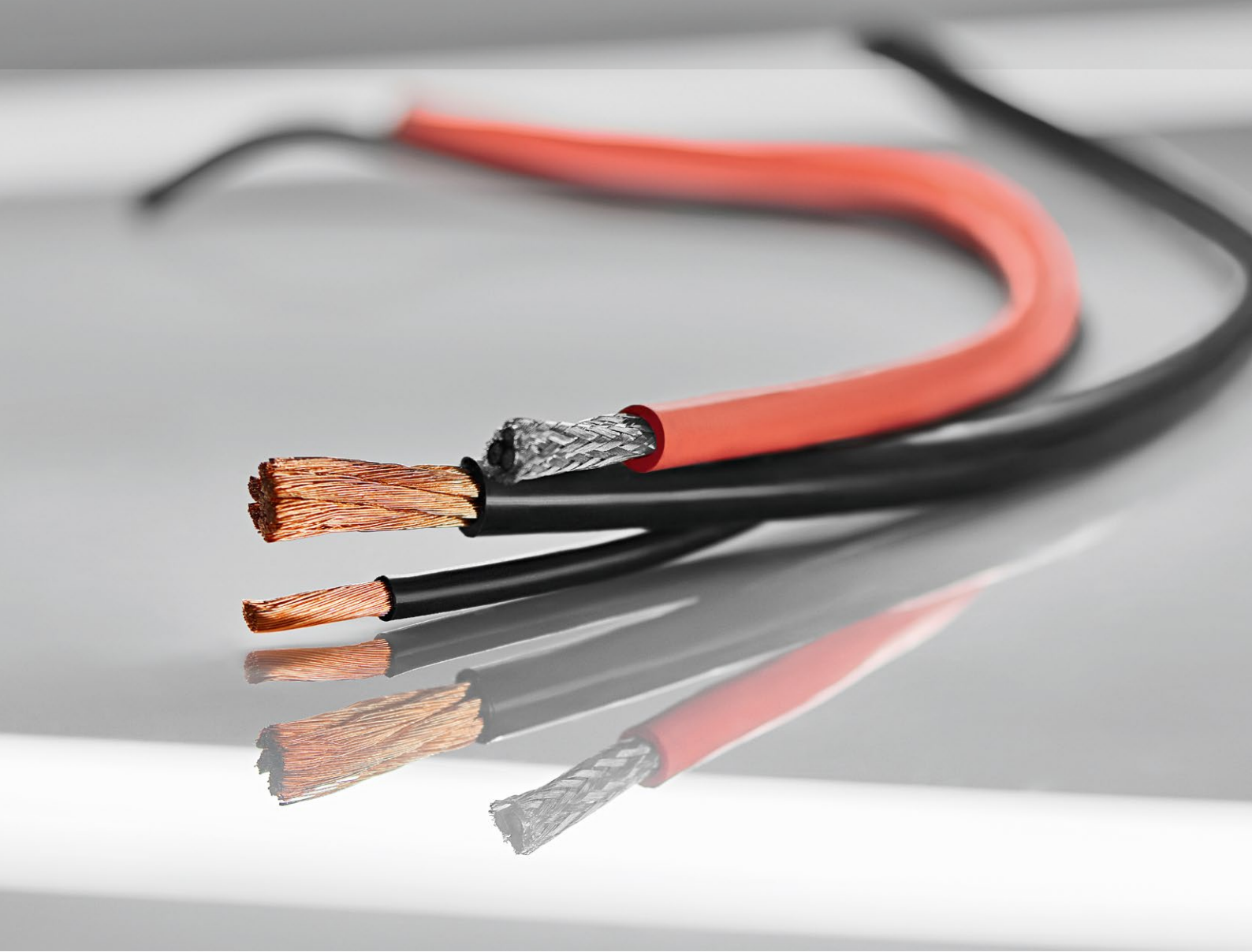


# Extrusion Lines with Infrared Curing for Silicone Cables

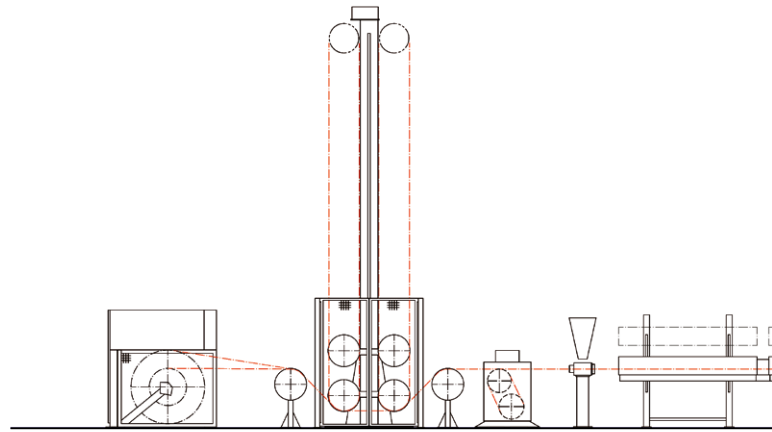


**TROESTER**

EXCELLENCE IN EXTRUSION.

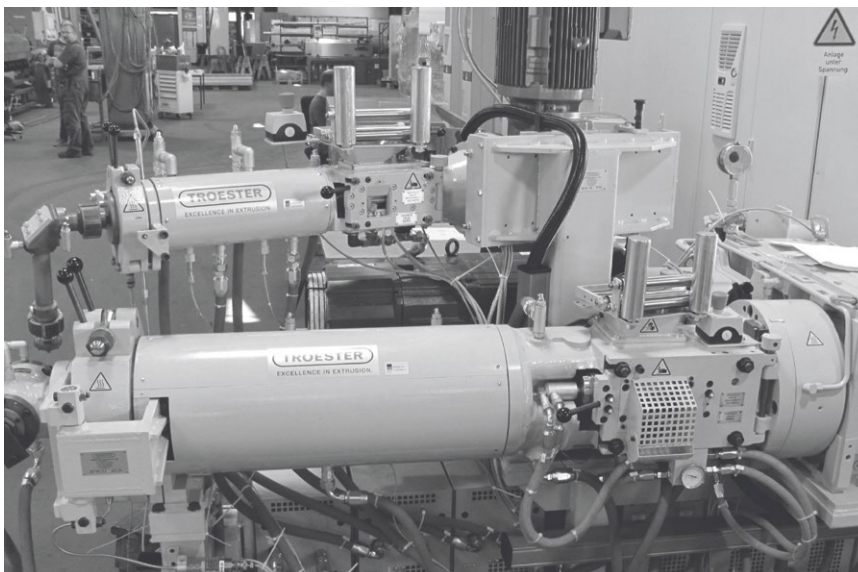
# Extrusion Lines with Infrared Curing for Silicone Cables

**Silicone cables are used for applications with the demand for high temperature resistance and flexibility. TROESTER Extrusion Lines with Infrared Curing process all kind of silicone materials at high output combined with excellent melt quality.**



## Silicone Extruder

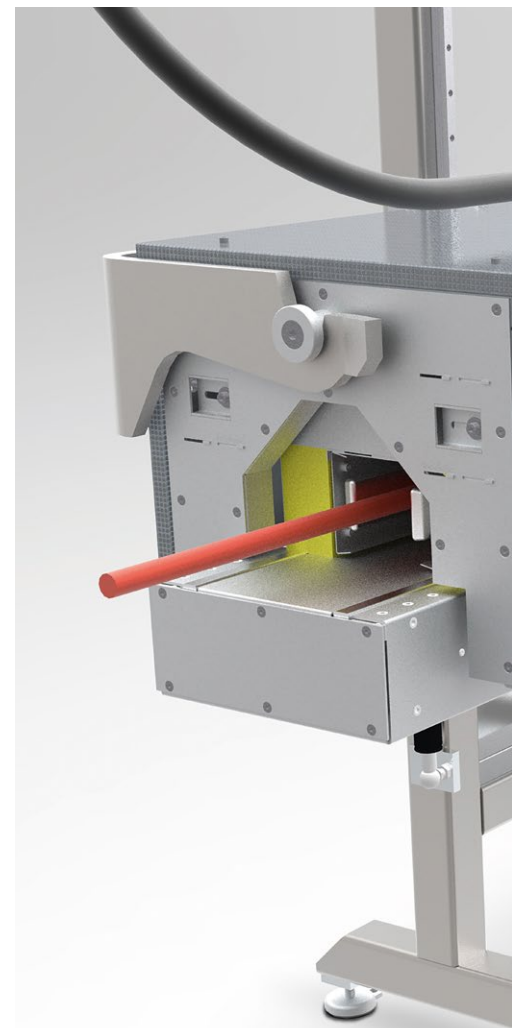
- > Feed roll for stripe/granulate feeding
- > Stripe feeding unit (option)
- > Cooling/Heating Units for improved process temperature control
- > Screw and barrel in abrasive resistance design



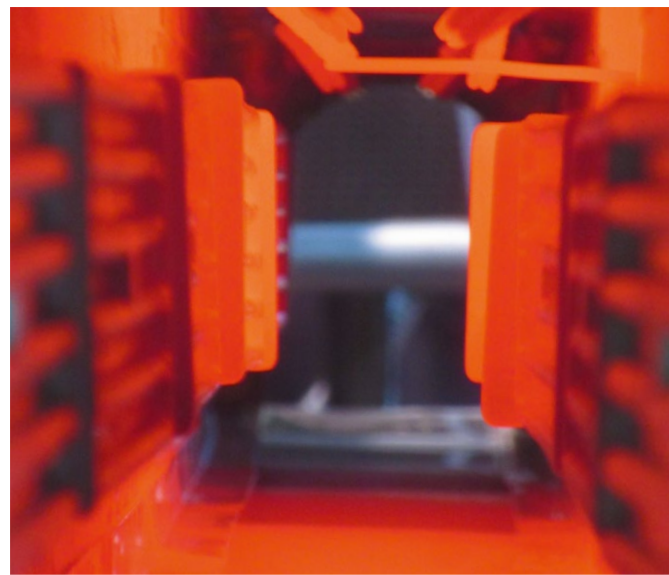
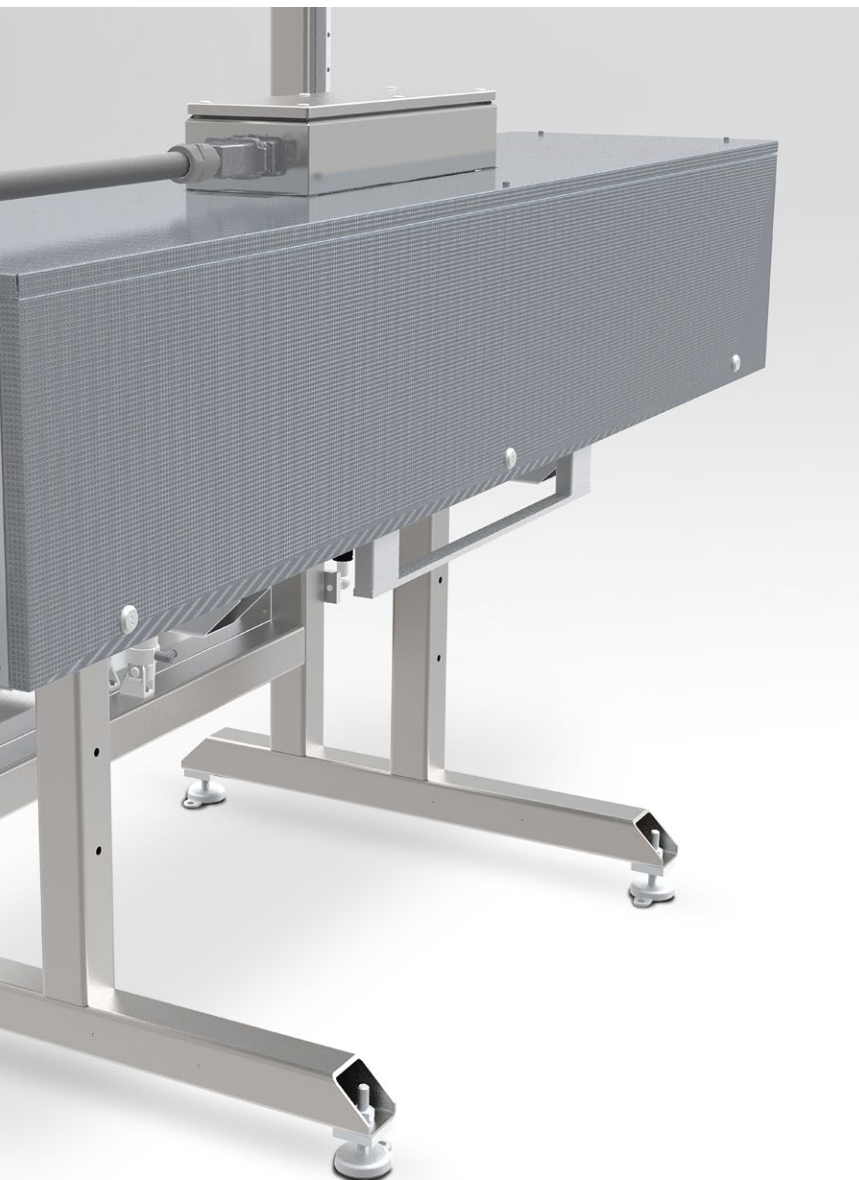
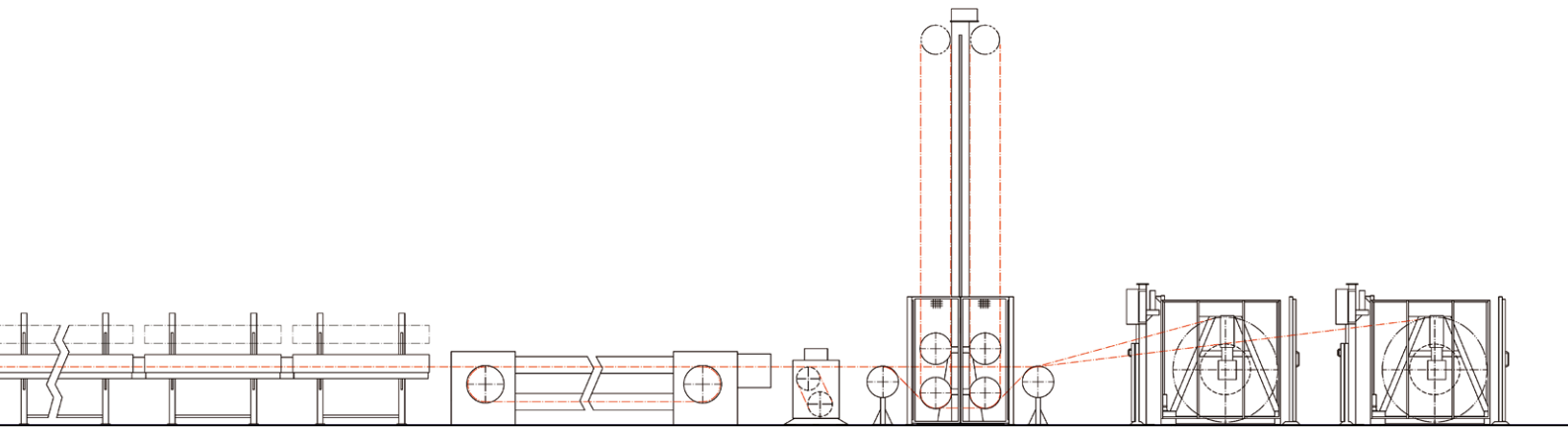
## Extruder Output

Extruder Size	without Screens [kg/h]		with Screens [kg/h]	
	Main	Skin/Stripe	Main	Skin/Stripe
GS/k SIL 45-14D	–	30	–	21
GS/k SIL 60-14D	80-120	65	60-85	45
GS/k SIL 90-14D	200-300	–	140-210	–
GS/k SIL 120-14D	405-510	–	280-355	–

For Silicones with peroxide curing agents

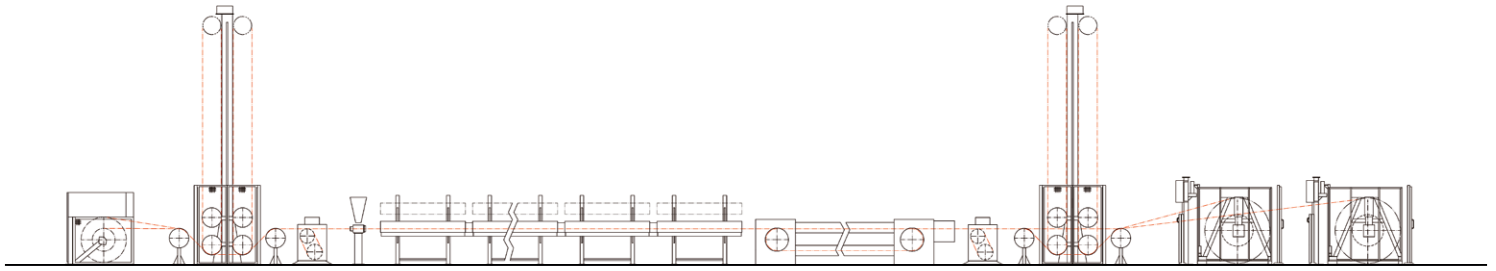


Infrared Curing Oven TRIOX



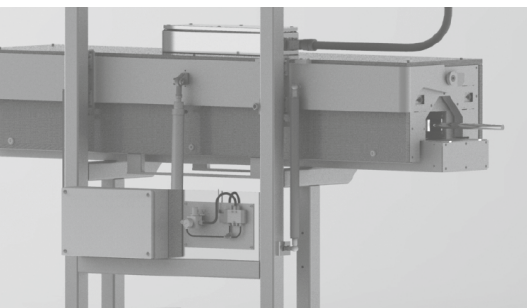
### **Infrared Curing Oven TRIOX**

- > Modular, compact design
- > Easy maintenance by exchangeable top unit
- > High efficiency by adjustable IR Heaters
- > Integrated Exhaust Extraction
- > Length adjustment by Intelligent multipass section



### Line Characteristic (Example)

Line Data	1	2	3
Conductor cross section	0,2-10,0 mm <sup>2</sup>	0,5-120,0 mm <sup>2</sup>	10-300 mm <sup>2</sup>
Wall thickness	0,5-1,4 mm	0,3-3,0 mm	1,0-6,5 mm
Cable diameter max.	8 mm	25 mm	40 mm
Cable weight max.	0,2 kg/m	1 kg/m	3 kg/m
Line speed max.	300 m/min.	300 m/min.	100 m/min.
<b>Line Configuration</b>			
Extruder 1	GS 60	GS 90	GS 120
Extruder 2	GS 45	GS 45	GS 45
Extruder 3	-	(GS 45)	(GS 45)
Cross head	Qu 20	Qu 25	Qu 40
IR Shock Oven	3 x 2,4 m	3 x 2,4 m	3 x 2,4 m
IR Curing Oven (Single/Multi)	5 x 2,4 m	6 x 2,4 m	8 x 2,4 m
Cooling Trough (Multipass)	15 m x 5	19 m x 5	19 m x 7



# TROESTER

EXCELLENCE IN EXTRUSION.

**TROESTER GmbH & Co. KG**  
 Am Brabrinke 1-4  
 30519 Hannover, GERMANY  
 Phone +49-511-87040  
 Fax +49-511-864028  
 E-mail [innovations@troester.de](mailto:innovations@troester.de)  
[www.troester.de](http://www.troester.de)

**TROESTER**  
**North & Central America**  
 Cable and Compounding Machinery  
 875 Elm Street, Apt 215  
 Manchester, NH 03101, USA  
 Phone +1-603-218-3084  
 Cell +1-603-867-3105  
 E-mail [eugenio.urbina@troester-group.com](mailto:eugenio.urbina@troester-group.com)

**TROESTER Machinery**  
**(Shanghai) Co., Ltd.**  
 Workshop No. 1, Area C  
 No. 6999 Chuan'sha Road, Pudong  
 Shanghai 201202, PR CHINA  
 Phone +86-21-58598308  
 Fax +86-21-58598310  
 E-mail [info@troester.cn](mailto:info@troester.cn)  
[www.troester.cn](http://www.troester.cn)

**X-Compound GmbH**  
 Hardmatt 932  
 CH -5082 Kaisten, Switzerland  
 Phone +41-62-869 10 30  
 Fax +41-62-874 32 08  
 E-mail [info@x-compound.com](mailto:info@x-compound.com)  
[www.x-compound.com](http://www.x-compound.com)